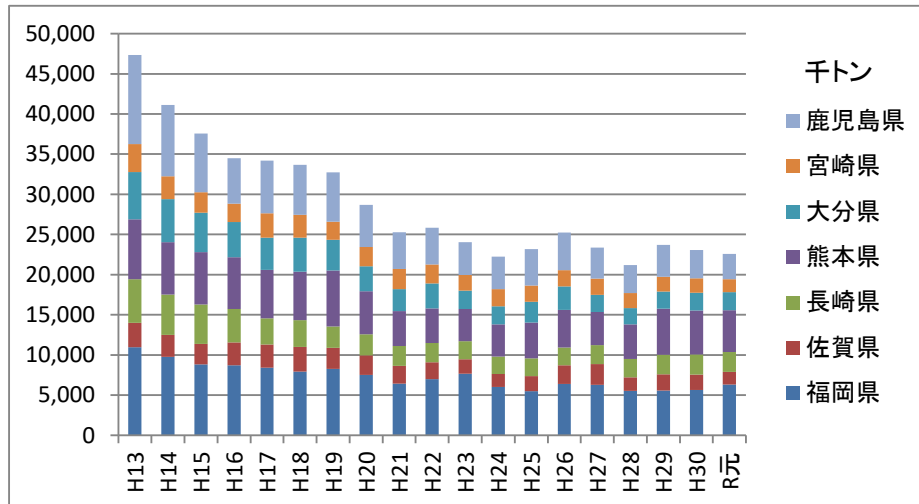


採石生産量(砕骨材:トン)[暦年] (採石法施行規則第11条報告書より作成)

(暦年)	全国	九州	福岡県	佐賀県	長崎県	熊本県	大分県	宮崎県	鹿児島県
H13	382,147,512	47,324,685	10,945,250	3,042,721	5,440,877	7,451,946	5,890,758	3,477,158	11,075,975
H14	367,558,360	41,126,225	9,775,961	2,728,597	5,000,703	6,541,549	5,353,202	2,828,121	8,898,092
H15	317,894,677	37,556,507	8,829,460	2,553,980	4,895,972	6,520,054	4,926,618	2,519,176	7,311,247
H16	281,433,365	34,501,112	8,718,617	2,849,908	4,160,096	6,429,773	4,394,917	2,272,408	5,675,393
H17	236,534,653	34,191,084	8,407,173	2,886,747	3,264,847	6,042,109	4,017,270	3,009,501	6,563,437
H18	237,783,133	33,670,192	7,930,532	3,078,274	3,337,540	6,016,769	4,223,626	2,872,957	6,210,494
H19	231,115,713	32,718,489	8,272,240	2,628,784	2,648,078	6,980,562	3,801,947	2,238,321	6,148,557
H20	205,539,826	28,696,899	7,498,137	2,471,760	2,586,150	5,376,344	3,101,691	2,402,588	5,260,229
H21	184,512,321	25,286,279	6,420,642	2,220,268	2,469,141	4,364,314	2,704,827	2,511,277	4,595,810
H22	177,725,021	25,838,537	7,002,295	2,096,805	2,405,804	4,296,275	3,105,963	2,369,752	4,561,643
H23	175,231,318	24,027,229	7,648,762	1,832,901	2,222,799	4,014,861	2,290,084	1,945,907	4,071,915
H24	176,232,818	22,256,864	6,034,498	1,610,637	2,154,119	4,016,176	2,248,783	2,132,071	4,060,580
H25	186,493,737	23,191,470	5,482,098	1,880,856	2,196,486	4,482,948	2,584,619	2,022,952	4,541,511
H26	189,681,714	25,231,532	6,403,041	2,326,604	2,209,316	4,670,363	2,920,376	2,039,837	4,661,995
H27	193,237,623	23,382,486	6,265,703	2,588,354	2,381,269	4,105,066	2,146,596	2,014,809	3,880,689
H28	177,190,159	21,182,073	5,524,721	1,676,037	2,317,396	4,287,047	2,010,579	1,872,415	3,493,878
H29	180,912,327	23,684,617	5,564,123	2,043,910	2,416,271	5,720,730	2,161,844	1,824,384	3,953,355
H30	179,101,581	23,053,170	5,630,266	1,939,856	2,478,616	5,498,730	2,207,917	1,802,848	3,494,937
R元	161,918,935	22,585,883	6,311,761	1,583,229	2,469,841	5,218,100	2,221,833	1,622,055	3,159,064

九州各県の生産量(砕骨材)



全国及び九州の生産量(砕骨材)

